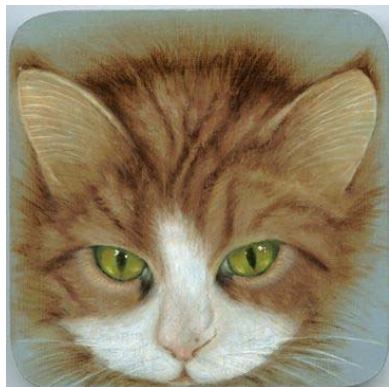


February 2010 Class Sign-up
Paint Your Cat's Portrait – in Oils with Phyllis Gibbs CDA



Phyllis Gibbs has been travel teaching and designing for 29 years. She has taught in chapters, seminars, and conventions throughout the USA and Japan. Also her designs have been displayed on the White House Christmas tree, Smithsonian, and the Library of Congress.

Phyllis will show you how to make a pattern from a photo of your Cat's face. You will need to have a good color photo of your cat's face, or any cat you wish to paint – You may even use Phyllis's cat face, which is the painted sample. You will need to take your cat picture to a place that does color copying and enlarge it to a size that will fit onto a 4 ½" to 5" surface.

Surface may be your own, wood or MDF, base-coated **with DecoArt Americana Light French Blue**. Phyllis will provide your oil palette, acetate and a piece of tracing paper.

You will need to bring:

- Your enlarged color copy of the Cat's face, along with the original picture.
- Your prepped surface (if you don't order one.)
- Brushes: I like Langnickel Royal Sables, Series 5010, #2,#4,#6 Flats and a short liner
- A fine point, permanent marker – like a Micron PIGMA 01 OR 03 – black or brown.
- Transfer paper (grey or white is ok)
- Paper towels and other usual supplies.

You will need to preorder the basket ASAP, so I can send the order into Phyllis by **December 15th 2009**. To place your basket order, Contact: Marilyne Fitzgerald, 937-426-7186 or e-mail gilmarco@juno.com

Date: February 13, 2010

Time: 9:00am-4:00pm. Business meeting 9:00am-10:00am

Location: We Care Arts, Inc. 3035 Wilmington Pike, Kettering Ohio 45439

[disclaimer: The use of We Care Arts, Inc., in reference to DAGSO is not intended to imply an affiliation between the two organizations,]

For information contact: Marilyne Fitzgerald at 937-426-7186 or E-mail gilmarco@juno.com

February Class sign-up 2010

Name: _____ **Phone #:** _____

Address: _____

Check # _____ [Members only] **Voucher Amt:** \$ _____

Member's fee \$39.00 _____ **Non Member's fee \$43.00** _____ [Palette Fee included]

____ **I want to use the photo of Micki. (\$1.00 for the color copy)**

____ **I want the prepped lid with the hand-made basket (\$15.00 for the set)**

Total fee: \$ _____

Make checks payable to DAGSO and send sign-up form to:

**Marilyne Fitzgerald,
1236 Hanes Rd.
Beavercreek, OH**